

Booster Innovation Scheme

Booster Innovation Fund



Update as at and for the month ending 30 June 2024

Investment Objective and Strategy

The Booster Innovation Fund aims to provide investors with an exposure to a diversified portfolio of early-stage companies founded on intellectual property originated or developed in New Zealand.

The fund will seek to invest in a diversified portfolio of investments in conjunction with a range of other specialist investors, across a range of different business sectors and stages of development to optimise the expected returns from early-stage investments. The fund obtains its investment exposure either directly or via underlying funds.

Return Objective

The fund aims to deliver a significant total rate of return (net of fees but before tax) that outperforms the NZX 50 Index over rolling 15-year periods.

How can you get your money out?

Units in the fund are quoted on the NZX main board. This means you may be able to sell your investments on the NZX if there are interested buyers.

The fund will also aim to make a **limited** amount of cash available for direct withdrawals on a quarterly basis.

Any withdrawals from the fund will incur a withdrawal charge of 10% of the amount withdrawn and will be subject to scaling if withdrawal requests exceed the cash available for withdrawals.

Note: You should regard an investment in this fund as **not readily redeemable** when making your investment decision.

Once the fund is mature, following a sale of an investment we intend to make a portion of the proceeds available for withdrawal.

Key Facts

Fund Size	\$19.5 million
Inception Date	24/8/2021
Manager	Booster Investment Management Limited
Supervisor	Public Trust
Fund Type	Portfolio Investment Entity (PIE)
Suggested Investment Timeframe	15 years +

Performance as at 30-June-2024¹

BIF was created in August 2021. Potential returns on early-stage businesses are uncertain, difficult to predict and can range widely both positively and negatively. By taking a portfolio approach to investing, the Booster Innovation Fund aims to deliver a significant total rate of return over rolling 15-year periods. Past performance is not an indicator of future performance.

	Before Tax	After Tax at 28%
Last 3 months	-0.5%	-0.5%
Last 6 months	0.7%	0.8%
Last 12 months	3.3%	3.1%
Last 2 years (p.a.)	8.4%	8.2%
Since inception (p.a.)	16.1%	16.6%

All figures are after fees. Please see the Product Disclosure Statement for further details.

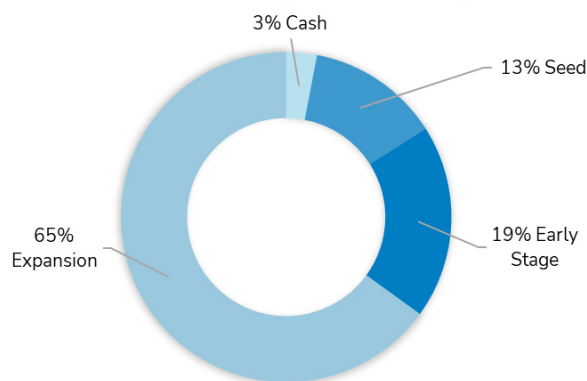
Risk Level

Early-stage company investing is generally considered the riskiest type of equity investing. While the fund is not required to calculate a Risk Indicator based on the volatility of the fund (being the extent to which the fund's assets go up and down), we consider the fund's risk rating would equate to 7 on a scale of 1 (low) to 7 (high). Please see the Product Disclosure Statement for a description of the circumstances that the manager is aware of that exist or are likely to arise that significantly increase the risk to returns for investors in the Booster Innovation Fund.

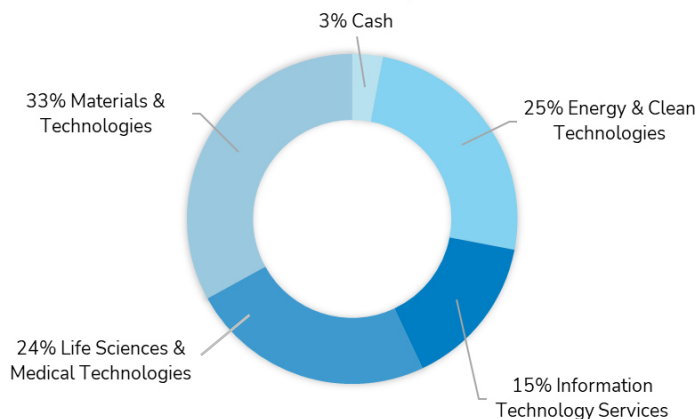


Portfolio Investments

Portfolio value by business stage

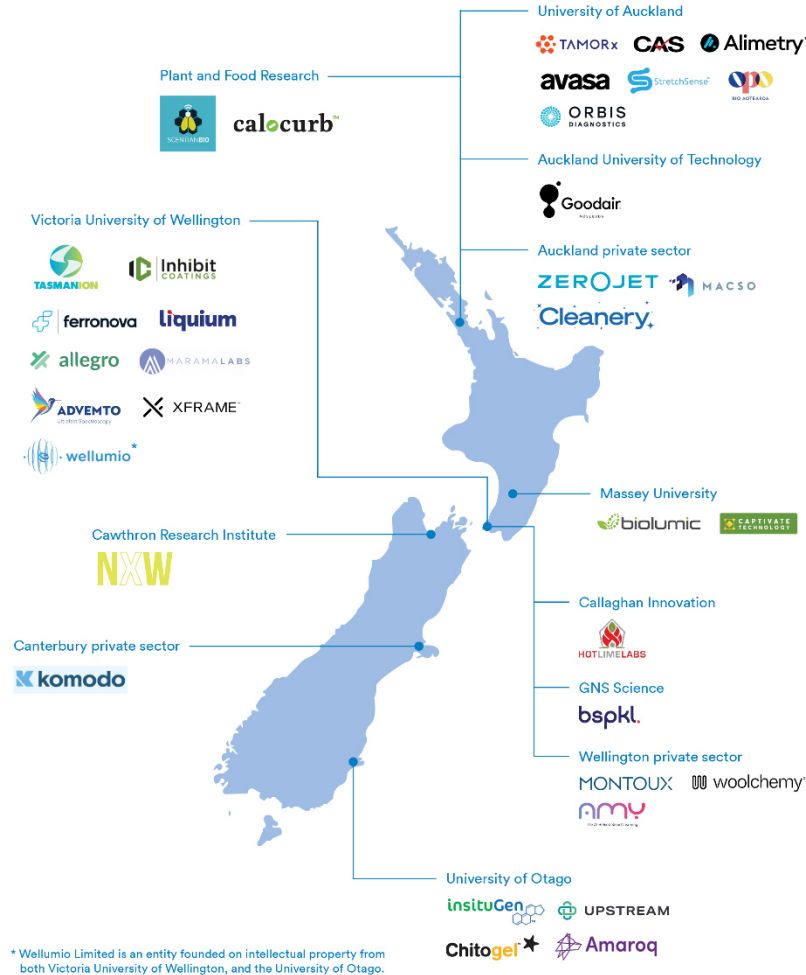


Portfolio value by sector



¹ Past performance is not an indicator of future performance.

Each investment of the Booster Innovation Fund is founded on intellectual property and inventions from leading New Zealand research institutions or private sector.



Further information on each of the investments held by the fund is available in the Product Disclosure Statement or on our website at www.booster.co.nz.

Client Authorisation

I certify and confirm that I have been given, and have read and understood the Booster Innovation Scheme Product Disclosure Statement for the Booster Innovation Fund, and subsequently authorise the purchase of units in the Booster Innovation Fund.

I understand that a Personal Investment Account will be opened (if necessary), through which units in the fund will be held and that the ability to withdraw from the fund is extremely limited.

Client Name:

Amount to be invested \$

Client ID:

Client Signature(s):

Date:

The Booster Innovation Fund (fund) is part of the Booster Innovation Scheme which is issued and managed by Booster Investment Management Ltd (Booster). The fund's Product Disclosure Statement is available at www.booster.co.nz, by contacting your financial adviser or by calling Booster on 0800 40 40 50.

This document is for informational purposes only. The information is derived from sources believed to be accurate as at the date of issue and may change. The content is of a general nature and does not take into account your financial situation or goals and is not financial advice. Booster Investment Management Limited and its related companies do not accept any liability for any loss or damage arising directly or indirectly out of the use of, or reliance on, the information provided in this document. The fund's performance, returns, or repayment of capital, are not guaranteed.